



WideTEK® 36CL/48CL/60CL



Setup Instructions English

09/2023

Table of Contents

Revision overview	4
Notes on the instructions and the manufacturer	5
Keep instructions available	5
Design features in the text	6
Design features in illustrations.....	7
Associated documents	7
Copyright	8
Contact details of the manufacturer in Germany	8
Technical support	8
Contact details of the manufacturer in the USA	8
Device safety	9
Intended use.....	9
Basic safety instructions.....	10
Responsibility of the operator	11
Personnel qualification.....	11
Design features of warnings	12
Design features of notices of damage to property	12
Description	13
Task and function	13
Overview WideTEK® 36CL/48CL/60CL.....	14
Overview back side.....	15
Overview screen page for the setup menu	16
Rating plate	17
Serial number	19
User interfaces	20
Installation site	21
Environmental conditions	21

Prepare setup.....	22
Connecting the power adapter	22
Establish network connection	23
Place the scanner on the optional base	23
Connecting the optional monitor.....	24
Connect optional touch screen	25
Switch on scanner	26
Switch off scanner	28
Perform setup	30
Setup Wizard	30
Activate setup menu	32
Height Adjustment - Changing the Height Adjustment (WT60CL)	35
System Restore	37
Solid State Disk Software Error	37
Recovery points.....	37
System Restore to Factory Defaults.....	38
System recovery of user settings	39
Cleaning	40
Technical Specifications	41
Scanner specification	41

Revision overview

Date	Rev.	Name	Description of change	Reason for change
15.07.2021	1.0	JKN	First draft	First published version
14.09.2022	1.1	JKN	Second draft	Updated version
04.09.2023	1.2	JKN	Third draft	Updated version

Notes on the instructions and the manufacturer

This manual will help you to safely prepare and perform the setup for the WideTEK® 36CL/48CL/60CL large format scanners. The WideTEK® 36CL/48CL/60CL large format scanners are hereinafter referred to as the "scanners".

The start button is referred to as the "power button" in this manual.

Keep instructions available

This manual is part of the scanner.

- Always keep this manual with the scanner.
- Make sure the manual is available to the user.
- Include this manual when selling or otherwise transferring the scanner.

Design features in the text

Various elements of this guide have specified design features. This allows you to easily distinguish the following elements:

normal text

BUTTONS OF THE SCREEN

"menu labels"

➤ Action steps

- first level enumeration

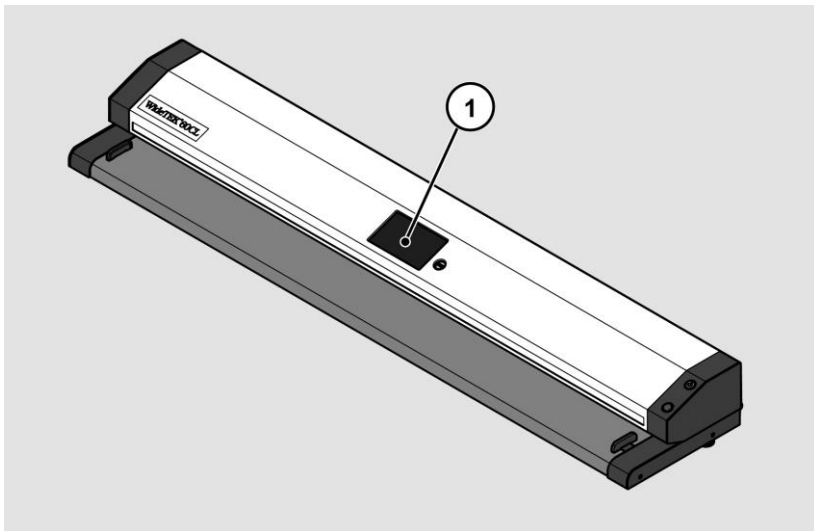
Cross-references



Tips contain additional information, such as specific details on how to prepare and perform the setup.

Design features in illustrations

When elements are referred to in a legend or in the running text, they are given a number (1).



Associated documents

Accompanying documents include:

- Unpacking and packing instructions
- Legal information (EC declaration of conformity, safety and EMC certificates, RoHS etc.).

Copyright

This manual contains information that is subject to copyright. This manual may not be copied, printed, filmed, processed, reproduced or distributed in any form, in whole or in part, without the prior written permission of Image Access GmbH.

© Image Access GmbH 2021

All rights reserved.

Trademark

Scan2Net®, Scan2Pad®, Bookeye® and WideTEK® are registered trademarks of Image Access, all other trademarks belong to their respective owners.

Contact details of the manufacturer in Germany

Image Access GmbH
Hatzfelderstraße 161-163
42281 Wuppertal
Tel.: +49-202-27058-0
E-Mail: dokumentation@imageaccess.de
Internet address: www.imageaccess.de

Technical support

You can reach Image Access GmbH technical support at the following e-mail address: support@imageaccess.de.

Contact details of the manufacturer in the USA

Image Access LP
400 N. Belvedere Drive
Gallatin, TN 37066 USA
Tel: +1 615-675-4141
Email: support@imageaccess.us
Web address: www.imageaccess.us

Device safety

Intended use

The scanner is used for scanning all kinds of images and documents. The documents must comply with the characteristics according to the technical specifications. The scanner is intended for use in closed rooms in the commercial sector.

Intended use also includes reading and understanding this manual and observing and following all instructions in this manual, especially the safety instructions. Any other use is expressly considered improper and will void any warranty and liability claims.

Environmental conditions

Make sure that the scanner is used only under the following environmental conditions:

- Ambient temperature during operation: 5 °C to 40 °C (41 °F - 104 °F)
- Storage temperature: 0 °C to 60 °C (32 °F to 140 °F)
- Relative humidity: 20 to 80 %, non-condensing

➤ Ensure that the scanner is not exposed to direct sunlight.

Basic safety instructions

Avoid injury or death from electric shock

- Never open the scanner case.
- Do not expose the scanner to dripping or splashing water, and do not place containers filled with liquid on the scanner. Liquid ingress may damage the scanner.
- Do not insert any objects into the scanner through any slots or openings.
- Only connect the scanner to a properly installed and grounded power outlet using the supplied power adapter.
- Do not use the power adapter if the housing or the cable of the power adapter is damaged. In this case, replace the power adapter with a one of the same type.
- Do not use the scanner if it is visibly damaged. In this case, unplug the power cord from the wall outlet. Contact Image Access technical support, see the *Technical Support* section beginning on page 8.

Avoid burns

- Do not cover the existing openings in the scanner housing. They are used for ventilation. Otherwise, the scanner could overheat.
- Do not place the scanner in front of air conditioners that emit intense heat.

Avoid broken bones, bruises and contusions

Incorrect routing of the cables can cause tripping.

- Route the connecting cables so that no one can trip over them.

The scanner weighs between 19 kg (42 lbs.) and 35 kg (77 lbs.).

- Handle the scanner only with the help of a second person.
- Place the scanner only on a firm, level, vibration-free surface that is strong enough to support the weight of the scanner.

Avoid material damage or malfunctions

- Ensure good room ventilation to maintain ambient conditions.
- Do not place the scanner near equipment that emits strong electromagnetic radiation.
- Always place the scanner on a suitable, stable table or on the optionally available base.
- Do not lean on the scanner.
- Make sure that the thickness of the original to be scanned does not exceed 3 mm.
- Do not use cleaning agents containing abrasive additives, solvents or acids. Use a damp microfiber cloth.
- Only operate the touchscreen with your finger or a suitable, conductive pen with a rubber tip. Other objects can damage the touchscreen.

Responsibility of the operator

The scanner operator must ensure that only qualified personnel perform the scanner setup.

Personnel qualification

Personnel performing setup of the scanner must be knowledgeable in setting up, connecting, and operating computer accessories.



Design features of warnings

This manual contains the following warnings:

 WARNING	
	Notes with the word WARNING warn of a dangerous situation that can possibly lead to death or serious injury.

 CAUTION	
	Notes with the word CAUTION warn of a situation that may result in minor or moderate injury.

The following symbols are used in the warnings:

Symbol	Explanation
	Danger due to electric shock
	General danger symbol

Design features of notices of damage to property

CAUTION!	
	Notes with the word CAUTION warn of a situation that will result in property damage.

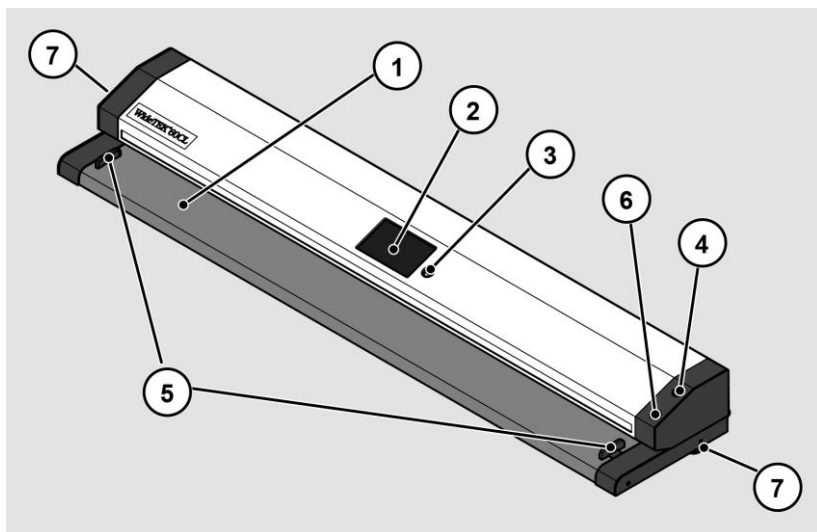
Description

Task and function

The scanner is used for scanning all kinds of images and documents. The characteristics of the documents such as size, weight must comply with the specifications found in the technical data. The scanner is intended for use in closed rooms in the commercial sector.

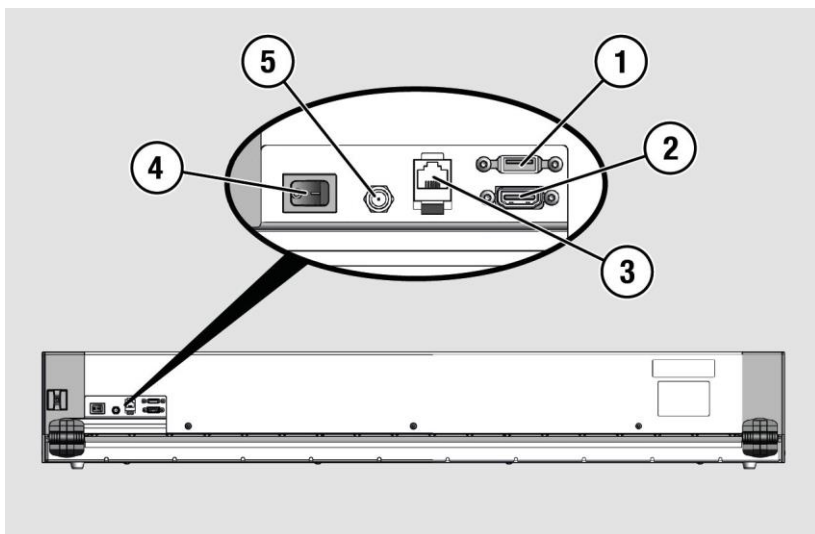
Intended use also includes observing and following all information in this manual, especially the safety instructions. Any other use is considered improper and will void the warranty and liability claims.

Overview WideTEK® 36CL/48CL/60CL



No.	Designation
1	Document transport
2	Touchscreen
3	USB connection socket
4	Power button
5	Transport aids
6	Stop button
7	Height adjustment screws (for example WideTEK 60CL)

Overview back side



No.	Designation
1	USB connection socket
2	HDMI connection socket
3	Network connection socket
4	Main switch
5	Connection socket 19 V DC for external power adapter

Overview screen page for the setup menu



No.	Designation
1	Buttons and parameters
2	Display of the menu designation
3	Display of online help ¹
4	Button for exiting the setup menu to the "Select Application" screen
5	Display of the serial number
6	Display of IP address
7	Display of firmware version
8	Button to drive the document forward in the scanner
9	Button to drive the document backward in the scanner (rewind)

¹ Online Help display is only available when a second touch screen is connected to the scanner.

Rating plate

The rating plate is located on the back of the scanner.

The following figure shows the nameplate of the model WideTEK® 36CL-600.



Description



The following figure shows the nameplate of the model
WideTEK® 48CL-600.



The following figure shows the nameplate of the model WideTEK® 60CL-600.



Serial number

The serial number of the scanner is located on the back of the device.
 Keep the serial number handy when calling for support.

User interfaces

The scanner can be operated in five ways.

- Via the touch screen and the ScanWizard Touch user interface.
- Via EasyScan or a client application.
- Via a standard web browser and the ScanWizard Client interface.
- Via the optional Scan2Pad® Hotspot.
- Via external scanning applications.

Installation site

Environmental conditions

When operating the scanner, make sure that the room is well ventilated to ensure the proper operating conditions.

The installation site must be chosen so that

- The side distance between scanner and wall is at least 100 mm,
- The distance between the back of the scanner and the wall is at least 50 mm,
- The distance to a door or room entrance is at least one meter.

Place the scanner on a level and stable base. The load-bearing capacity of the base must be suitable for the weight of the scanner (maximum 30 kg, 66 lbs.). The dimensions of the base must be suitable for the footprint of the scanner.





- ❗ After changing from a cold to a warm environment, allow at least one hour for the scanner to adjust to the ambient temperature before turning it on.

When the scanner changes from a cold to a warm environment, condensation moisture may form inside the housing.

This disappears when the housing temperature has adjusted to the ambient temperature. Condensation moisture can lead to poor scanning results or even damage the scanner.

Prepare setup

Connecting the power adapter

 WARNING	
	<p>Risk of electric shock due to incorrect connection.</p> <ul style="list-style-type: none"> ➤ Ensure that the mains socket is earthed in accordance with local regulations.
 CAUTION	
	<p>Incorrect routing of the connection cables can cause tripping, broken bones, bruises and crushing.</p> <ul style="list-style-type: none"> ➤ Lay the connection cables so that no one can trip over them.

To connect the power supply, proceed as follows:

- Make sure the scanner's main power switch is turned off (0 position).
- Use only the supplied power adapter and power adapter cable.
- Make sure that the power adapter cable is undamaged.
- Connect the low voltage plug to the corresponding DC connector on the back of the scanner.
- Connect the power adapter plug to a power outlet of suitable voltage. (100-240 V AC)

Establish network connection

CAUTION



Incorrect routing of the connection cables can cause tripping, broken bones, bruises and crushing.

- Lay the connection cables so that no one can trip over them.

To establish the network connection, follow the steps below:

- Connect one plug of the supplied network cable to the network connection jack on the back of the scanner.
- Connect the second plug to the network connection socket of an existing network.

Place the scanner on the optional base

CAUTION



The scanner weighs between 19 kg (42 lbs.) and 34 kg (75 lbs.).

- Use a second person to carry the scanner.
- When setting up the scanner, secure it to prevent it from falling.

To place the scanner on the optional base, follow the steps below:

- Assemble the optional base according to the assembly instructions provided.
- Place the scanner on the optional base according to the mounting instructions provided.

Connecting the optional monitor

CAUTION



Incorrect routing of the connection cables can cause tripping, broken bones, bruises and crushing.

- Lay the connection cables so that no one can trip over them.

To connect an optional monitor, follow the steps below:

- Connect the DisplayPort connector of the monitor to the DisplayPort connector on the back of the scanner.

Connect optional touch screen

CAUTION



Incorrect routing of the connection cables can cause tripping, broken bones, bruises and crushing.

- Lay the connection cables so that no one can trip over them.

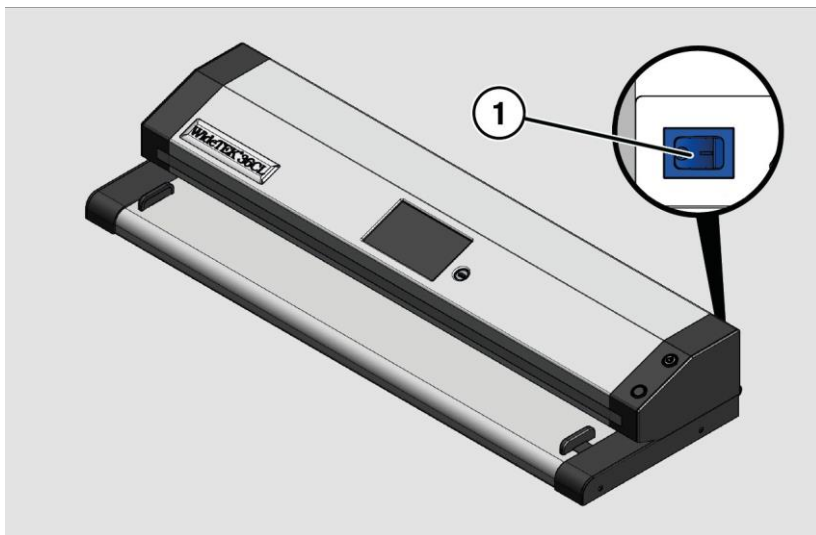
To connect an optional touch screen, follow these steps:

- Connect the DisplayPort connector of the touchscreen to the DisplayPort connector jack on the back of the scanner.
- Connect the USB connector of the touchscreen to the USB connector on the back of the scanner.

Switch on scanner

To switch on the scanner, proceed as follows:

- Press the MAIN switch (1) on the rear panel to the "I" position.



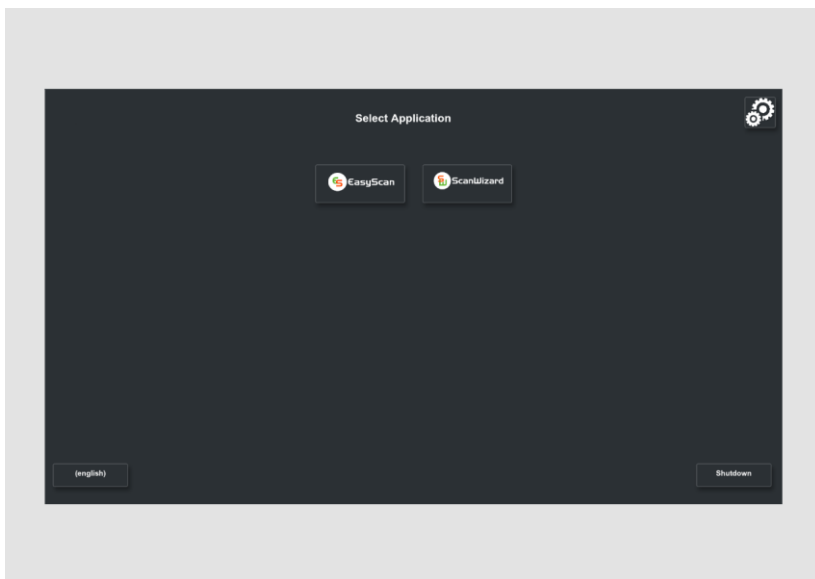
The scanner is in stand-by mode.

To start the scanner from stand-by mode, proceed as follows:

- Press the Power button.

The Power button lights up blue.

The scanner performs a system test. After a short waiting period, the "Application selection" screen will be displayed in English.

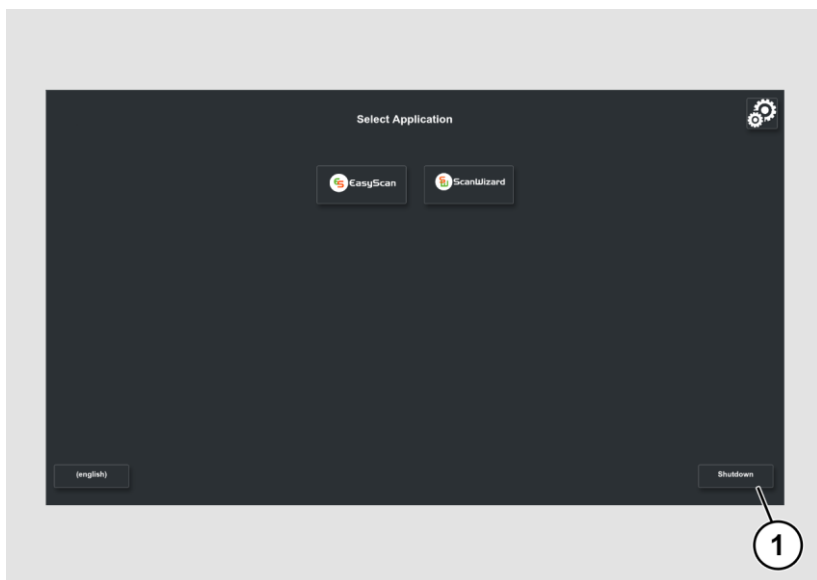


Switch off scanner

To switch the scanner to stand-by mode after performing the setup, proceed as follows:

- On the Select Application screen, tap POWER OFF (1).

You can also press the POWER button briefly to access this menu. Do not press the POWER button for longer than 5 seconds, otherwise the scanner will switch off hard.



- Confirm with YES.

The scanner shuts down. This process can take up to approx. 40 seconds.

The scanner is in stand-by mode.

Alternatively, switch the scanner to stand-by mode as follows:

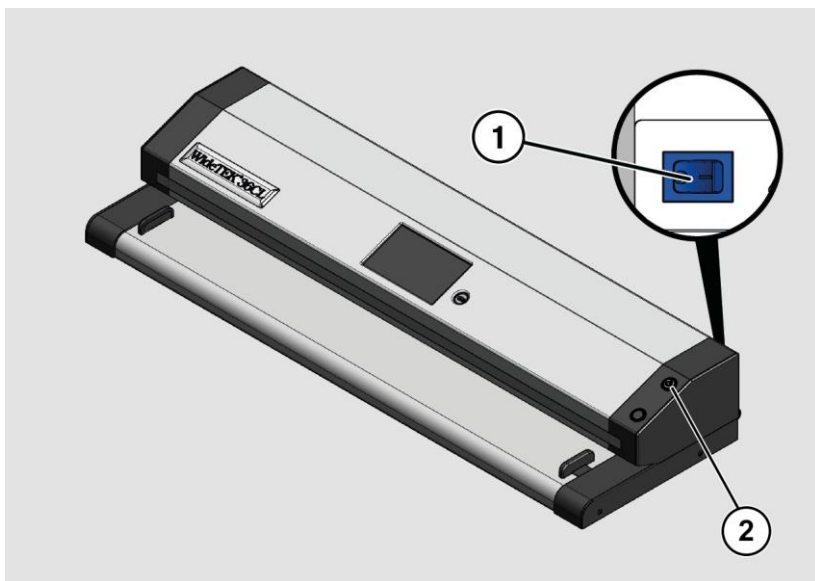
- Press the blue illuminated power button (2) and confirm the dialog displayed on the touch screen.

The scanner shuts down. This process can take up to approx. 40 seconds.

The scanner is in stand-by mode.

To turn off the scanner for an extended period of time, do the following:

- Make sure the scanner is in stand-by mode.
- Press the MAIN switch (1) to the "0" position.



To hard power off the scanner, do the following:

- Press and hold the power button (2) for more than 4 seconds.

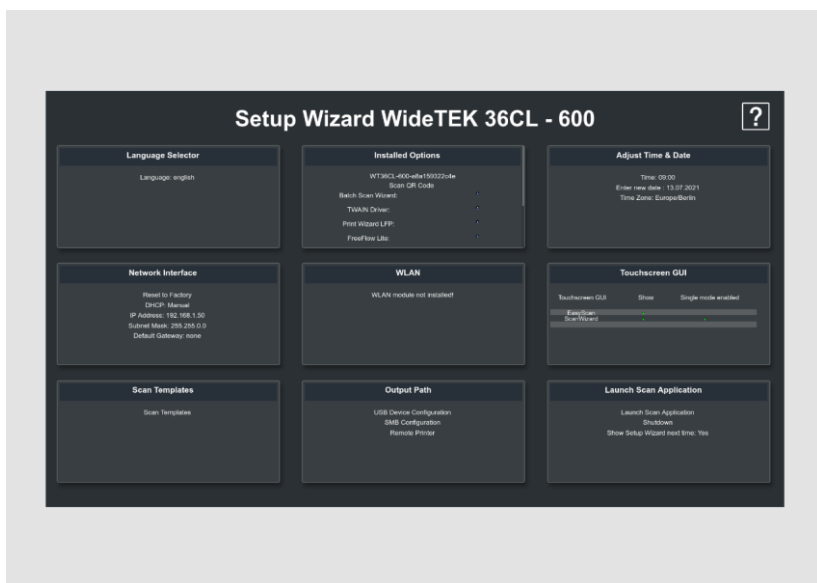
The power to the running scanner will be cut off immediately.

- Press the MAIN switch (1) to the "0" position.

Perform setup

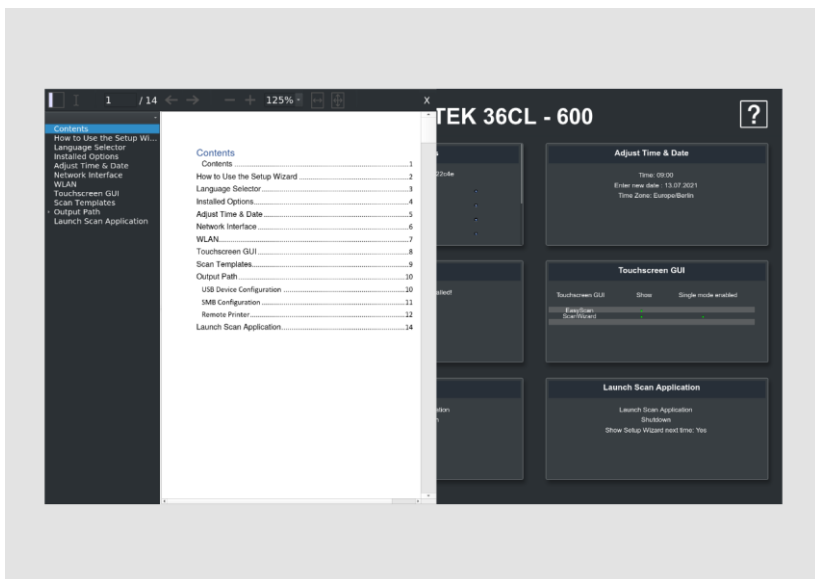
Setup Wizard

The Setup Wizard is displayed on the touchscreen immediately after the startup process is complete.



The Setup Wizard allows the user to perform the most important settings on the touch screen during the initial installation of a Scan2Net scanner. After the Setup Wizard has been successfully completed, the scanner can be used immediately without any further settings.

All user interfaces of the Setup Wizard are described in the online help.



To exit the Setup Wizard you have to deactivate it in the **LAUNCH SCAN APPLICATION** tile.

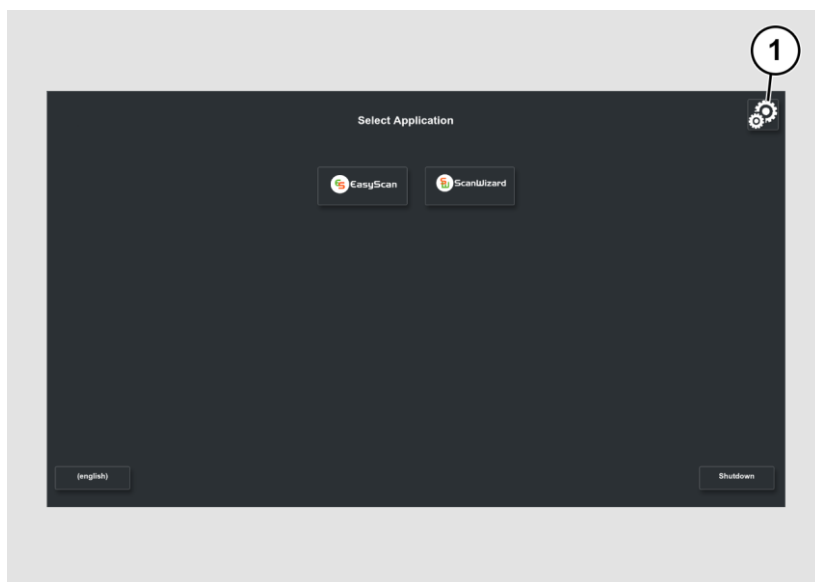
Starting the Setup Wizard after booting the scanner can be reactivated in the **DEVICE SETUP** section of Scan2net.

- Open a tab in a web browser and enter the IP address assigned to the scanner in the address bar.
- The Scan2Net window will appear.
- Click the **SETUP DEVICE** button, and then click the **POWERUSER** button.
- Enter "Poweruser" as the login name and password.
- Select the **SETUP WIZARD** button from the Administrative Settings menu.
- Finally, select **YES** in the Setup Wizard menu.

Activate setup menu

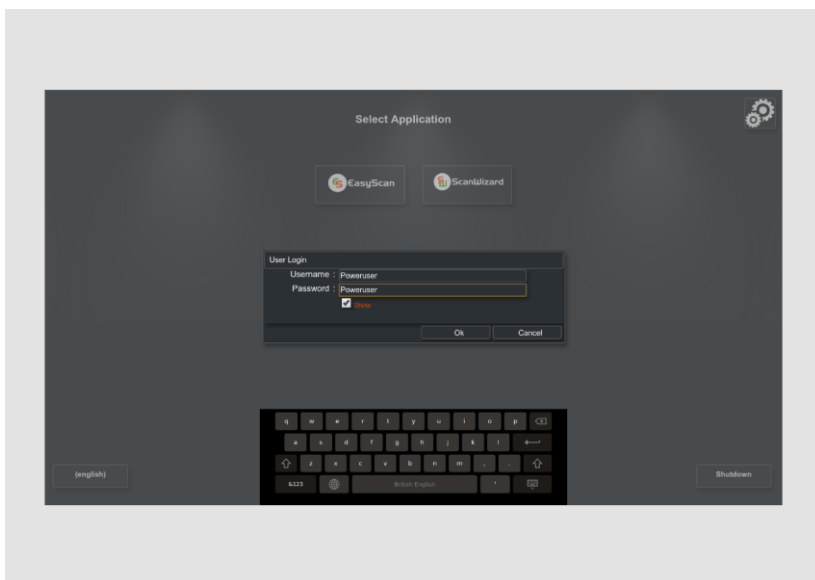
To activate the setup menu, you must log in. To do this, proceed as follows:

- Tap on the OPERATION SYMBOL (1).



The login screen is displayed.

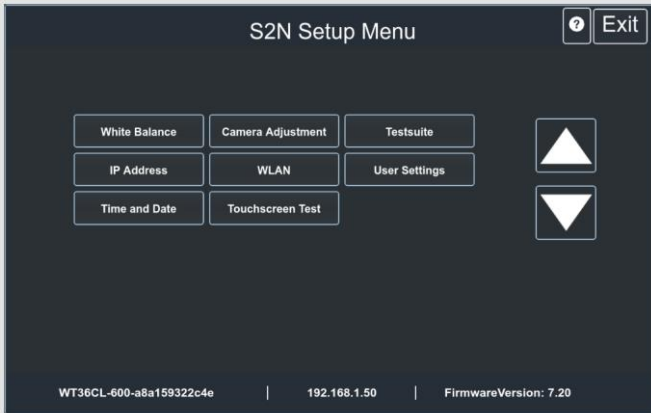
- Enter the login data in the login window.
- To do so, tap the corresponding input field with your finger.
- The on-screen keyboard is displayed.
- Enter "Poweruser" in both input fields.
- Note that the input is case sensitive.



- To complete the registration, tap OK.

The S2N Setup Menu screen appears.

Overview screen page for the setup menu



- White balance: Display the white balance submenu.
- Camera Settings: Display the "Camera settings" and "Stitching" submenus.
- Test Suite: Display the "Test Suite" submenu
- IP Address: Display the "IP Address" submenu
- Wireless Network: Display the "Wireless Network" submenu.
- User Settings: Display the "User Settings" submenu
- Time and Date: Display the "Time and Date" submenu.
- Touchscreen Test: Display of the submenu "Touchscreen test".

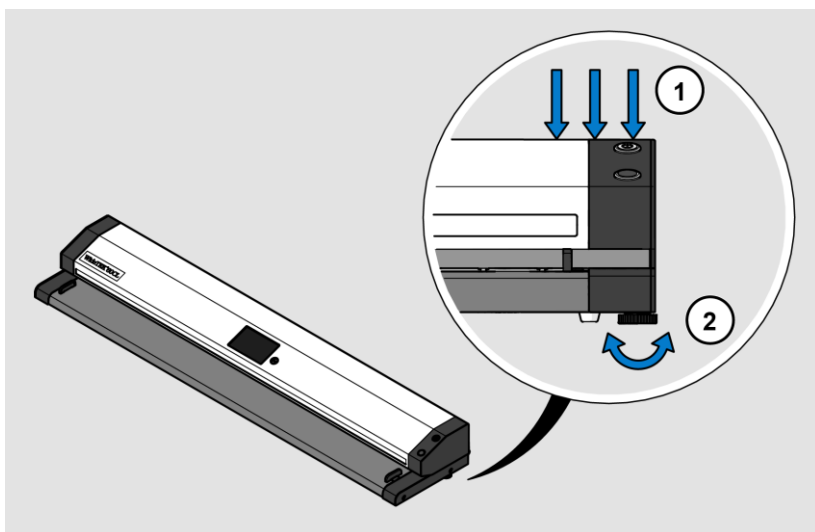
- To select a submenu on the S2N Setup Menu screen page, tap the corresponding button on the screen page with your finger.
- All user interfaces of the setup menu are described in the online help.

Height Adjustment - Changing the Height Adjustment (WT60CL)

By changing the height setting, your scanner can transport and scan objects with a maximum thickness of 11mm.

Loosening the height adjustment

Stand sideways, to the right, next to the device.



- Press down the upper unit from above, at the right outer edge, with one hand (1) and hold the pressure.
- Please make sure that the upper unit is not tilted in the front or rear transport direction.
- With your other hand, loosen the right, orange, adjusting screw (2) until the upper unit has moved to the highest position (approx. 10mm).
- Carry out the same steps on the left side.

Perform setup

Adjusting the height setting to the thickness of the object

- Push the object right-justified through the scanner until it protrudes from the back.
- Press down the upper unit from above, at the right outer edge, with one hand (1) until it is in contact with the object.
- Fix this position with the orange adjusting screw (2).
- Slide the object through the scanner flush left and follow the same steps.

Checking height adjustment and document transport

- Place the object in the center and check the transport by pressing the two buttons for document transport on the operating screen.

The object should move backwards and forwards evenly and without resistance.

- The object must always be supported by the user.

This applies to both the feeding and the ejection at the end of the scanning process.

If the object turns to the left during transport, the pressure on the right side is too low.

If the object rotates to the right, the pressure on the left side is too low.

- Change the pressure on the object with the two adjusting screws (2).

If the object cannot be moved backwards and forwards or if it sticks to the rear, the pressure is too high.

Test scan

- Now insert the item back into the machine for scanning.
- In ScanWizard, from the "Transport / Transport Speed" menu, select the "Thick Documents" function.
- Start a scan.

The height adjustment was successful if the scanned item was transported straight during the scan process, without any resistance, and the resulting image does not have any image errors.

System Restore

Solid State Disk Software Error

The file system and Linux operating system of a Scan2Net scanner are very robust and fault tolerant. The file system is capable of repairing itself even if the system loses power during a hard drive write, which would almost certainly damage any Windows, Android, or MAC operating system based computer. However, it is still possible for the Scan2Net Linux software on the SSD to become corrupted under certain circumstances. Unexpected power outages, hard shutdowns via the main power switch without a prior controlled shutdown, and other unexpected interruptions to the operating system can cause this type of disruption. In addition, any uncontrolled interruption of a firmware update procedure or other functions that involve writing to main storage (SSD) poses a potential risk to the integrity of the firmware on the SSD. The Scan2Net operating system of any WideTEK® or Bookeye® scanner is Linux based and although it is very rare, Linux can be corrupted like any other operating system.

If the Linux operating system or other parts of the SSD are damaged, there is still no need to replace the SSD, at least not until the recovery procedure is performed once. These recovery procedures are similar to the procedures necessary to restore other operating systems to a previous state.

Recovery points

Up to two backup copies of the Scan2Net Linux operating system are stored on the internal SSD. The first copy is created during manufacturing. This is the restore point labeled "Factory Default". The second can be created by the user at any time. This is the restore point labeled "User Settings".

System Restore to Factory Defaults

The recovery procedure is a simple process:

Step	Action
1	Turn off the scanner either from the touchscreen, from the Scan2Net application currently in use, or by pressing the POWER button. If the device does not go into standby mode, press and hold the POWER button for more than 5 seconds to hard-switch the scanner into standby mode. If the device does not hard-switch into stand-by mode, press the MAIN SWITCH to the "0" position to turn off the scanner.

- i** Make sure that the following process is not interrupted by a hard shutdown or power failure.
If this process is interrupted, loss of the system restore point is possible, so the SSD must be physically replaced.

- i** The following process cannot be influenced by the user.

Step	Action
2	Make sure the main power is on and the scanner is in standby mode.
3	Press and hold the red RESET button on the back of the scanner before turning it on! Turn on the scanner by pressing the POWER button. Note: During the power-up process, the RESET button must be pressed and held until it lights up continuously!
4	Restoration of the file system will begin immediately. This process takes about 1 - 2 minutes. At the end of the recovery process, the scanner will automatically reboot.

System recovery of user settings

Set system restore point

Step	Action
1	Open a tab in a web browser and enter the IP address of the scanner.
2	The Scan2Net window appears.
3	Click SETUP DEVICE, and then click POWERUSER.
4	Enter "Poweruser" as the user name and password.
5	Select SYSTEM RESTORE from the RESETS AND DEFAULT VALUES menu.
6	Select SET RESTORE POINT.

Please wait until the process is complete and the READY message is displayed. The entire process takes about 1 - 2 minutes.

System Restore

Step	Action
1	Open a tab in a web browser and enter the IP address of the scanner.
2	The Scan2Net window appears.
3	Click SETUP DEVICE, and then click POWERUSER.
4	Enter "Poweruser" as the username and password.
5	Select SYSTEM RESTORE from the RESET & DEFAULT VALUES menu.
6	Select RESTORE SYSTEM.

The unit restarts immediately. The system recovery is then performed. This procedure takes approximately 1 - 2 minutes. To complete the procedure, the device performs a second restart of the restored system.


End of the system recovery procedure.

Cleaning

To keep the scanner in good working condition, make sure it is free of dust, ink, grease, and other contaminants. Scanners are high resolution optical instruments with high quality glass parts. Since a higher quality scanner will reveal smaller particles of dirt and dust better than a lower quality scanner, special care must be taken to keep all parts, and especially all glass parts, as clean as possible.

The cleaning intervals are determined by the scanner environment and the type of documents scanned, as well as the frequency of use. The scanner should be cleaned under the following circumstances.

- When sporadic or frequent image quality problems occur.
- When sporadic or frequent cropping problems occur, even though the document is in the correct area of the scan area.

 To avoid electric shock and other potential damage, make sure the scanner is turned off and unplugged before cleaning. Do not allow water to enter the scanner.

Proper general cleaning should include the following:

- Use an electric vacuum cleaner to remove dust from all parts before proceeding to clean other parts of the product. Be careful not to touch any parts with the dust cleaning hose.
- Clean the outer surface of the Product with a damp cloth. Dampen the cloth and wring it out as much as possible. For best results, use a microfiber cloth.
- The glass surfaces of the scanner should only be cleaned using a soft, lint-free cloth.
- Use a mild soap and water solution only when necessary. Do not use abrasive cleaners.
- Wipe the product dry with a soft, lint-free cloth. Be especially careful when cleaning the touch screen.

Technical Specifications

Scanner specification

Optical System WideTEK® 36CL-600

Maximum document size	965 mm (38 inches)
Scan width	915 mm (36 inches)
Scan position	Document side up
Scanner resolution	1200 × 1200 dpi (optional 9600 × 9600 dpi interpolated)
Pixel size	42 x 42µm
Sensor type	Three CIS modules
Color depth	48 bit color (internal resolution) 16 bit grayscale (internal resolution)
Scan Modes	24 bit color, 8 bit color indexed, 8 bit grayscale, bitonal, halftone
File formats	Multipage PDF (PDF/A) and TIFF, JPEG, JPEG 2000, PNM, PNG, BMP, TIFF (Raw, G3, G4, LZW, JPEG), AutoCAD DWF, JBIG, DjVu, DICOM, PCX, Postscript, EPS, Raw data

Technical Specifications

Optical System WideTEK® 48CL-600

Maximum document width	1270 mm (50 inch)
Scan width	1220 mm (48 inch)
Orientation of the document	Face-up
Scanner resolution	1200 × 1200dpi (optional 9600 × 9600 dpi interpolated)
Pixel size	42 x 42µm
Sensor type	Three CIS modules
Color depth	48 bit color (internal resolution) 16 bit grayscale (internal resolution)
Scan modes	24 bit color, 8 bit color indexed, 8 bit grayscale, Bitonal, Halftone
File formats	Multipage PDF (PDF/A) and TIFF, JPEG, JPEG 2000, PNM, PNG, BMP, TIFF (Raw, G3, G4, LZW, JPEG), AutoCAD DWF, JBIG, DjVu, DICOM, PCX, Postscript, EPS, Raw data

Optical System WideTEK® 60CL-600

Maximum document width	1524 mm (60 inches)
Scan width	1570 mm (61.85 inches)
Orientation of the document	Face-up
Scanner resolution	1200 × 1200dpi (optional 9600 × 9600 dpi interpolated)
Pixel size	42 x 42µm
Sensor type	Five CIS modules
Color depth	48 bit color (internal resolution) 16 bit grayscale (internal resolution)
Scan modes	24 bit color, 8 bit color indexed, 8 bit grayscale, Bitonal, Halftone
File formats	Multipage PDF (PDF/A) and TIFF, JPEG, JPEG 2000, PNM, PNG, BMP, TIFF (Raw, G3, G4, LZW, JPEG), AutoCAD DWF, JBIG, DjVu, DICOM, PCX, Postscript, EPS, Raw data

Environmental conditions

Ambient temperature during operation	+5 to +40 °C
Storage temperature	0 to +60 °C
Relative humidity	20 to 80 % (non-condensing)
Noise level	< 35 dB(A) (scanning) < 25 dB(A) (stand-by)

Technical Specifications

Electrical Specifications

External Power Supply

Voltage	100-240 V AC
Frequency	47-63 Hz
ECO Standard	CEC Level VI

Scanner

Voltage	19 V DC
Current	3 A

Power consumption WideTEK® 36CL-600

Sleep	0.3 W
Stand-by	2.8 W
Ready to scan	25 W
Scanning	45 W

Power consumption WideTEK® 48CL/60CL-600

Sleep	0.3 W
Stand-by	6.5 W
Ready to scan	30 W
Scanning	50 W

Document specification

Document length	Up to 500 m (20,000 inches) ¹
Paper grammage	any
Document thickness	2.5 mm (0.1 in.) max. (WT36CL/WT48CL) 11.0 mm (0.4 in.) max. (WT60CL)

¹(Maximum document length depends on scan resolution and scan output).

Dimensions and weight WideTEK® 36CL-600

Dimensions and Weight WideTEK® 36CL-600	
Scanner dimensions (H × W × D)	170 x 1088 x 358 mm (7 x 43 x 14 inches)
Scanner weight	19 kg (42 lbs.)
Weight of base frame	10 kg (22 lbs.)
Transport box dimensions (box scanner) (H × W × D)	260 x 1160 x 440 mm (10 x 46 x 17 inches)
Transport box dimensions (cardboard box base) (H × W × D)	140 x 270 x 1100 mm (6 x 11 x 43 inches)
Weight (scanner), ready for shipment	29 kg (64 lbs.)
Weight (stand), ready to ship	11 kg (24 lbs.)

Technical Specifications

Dimensions and weight WideTEK® 48CL-600

Dimensions and Weight WideTEK® 48CL-600

Scanner dimensions (H × W × D)	170 x 1418 x 358 mm (7 x 56 x 14 in.)
-----------------------------------	--

Scanner weight	29 kg (63 lbs.)
----------------	-----------------

Weight of base frame	11 kg (42 lbs.)
----------------------	-----------------

Transport box dimensions (Carton Scanner (H × W × D)	270 x 1490 x 450 mm (11 x 59 x 18 in.)
---	---

Transport box dimensions (carton base) (H × W × D)	140 x 270 x 1400 mm (6 x 11 x 56 inches)
---	---

Weight (scanner), ready for shipment	35 kg (77 lbs.)
--------------------------------------	-----------------

Weight (base frame), ready for shipment	12 kg (26 lbs.)
---	-----------------

Dimensions and weight WideTEK® 60CL-600
**Dimensions and Weight WideTEK®
60CL-600**

Scanner dimensions (H × W × D)	170 x 1697 x 358 mm (7 x 67 x 14 inches)
-----------------------------------	---

Scanner weight	35 kg (77 lbs.)
----------------	-----------------

Weight of base frame	21 kg (46 lbs.)
----------------------	-----------------

Transport box dimensions (Carton Scanner (H × W × D)	250 x 1780 x 440 mm (10 x 70 x 17 in.)
---	---

Transport box dimensions (carton base) (H × W × D)	250 x 1780 x 440 mm (10 x 70 x 17 in.)
---	---

Weight (scanner), ready for shipment	39.5 kg (87 lbs.)
---	-------------------

Weight (base frame), ready for shipment	31.5 kg (69 lbs.)
--	-------------------

End of the document

Other WideTEK® 36CL/48CL/60CL large format scanners Documentation

To get the best possible results from your WideTEK® 36CL/48CL/60CL wide format scanner and to fully understand its operation, you should always have the latest version of the manuals, instructions, and other product documentation. The printed version may already be out of date. You can use the respective QR code or hyperlink shown here to check whether your product documentation is complete and up to date. The documents are available in English, German, Spanish and French.

WideTEK® 36CL

<https://www.imageaccess.de/?page=ScannersWT36CL-600Documentation&lang=en>



WideTEK® 48CL

<https://www.imageaccess.de/?page=ScannersWT48CL-600Documentation&lang=en>



WideTEK® 60CL

<https://www.imageaccess.de/?page=ScannersWT60CL-600Documentation&lang=en>

