



WideTEK-MFP
for
HP Printers



Setup Instructions
MF-3
English

08/2019

Contents

Revision History	3
Information about the Instructions and the Manufacturer	4
Keep Instructions with the Scanner	4
Design Features in Text.....	4
Design Features in Pictures.....	5
Associated Documents	5
Trademarks	6
Contact Data of the Manufacturer in Germany.....	6
Technical Support	6
Contact Data of the Manufacturer in the U.S.	6
Safety.....	7
Intended Use	7
Responsibility of the Owner	7
Staff Qualifications.....	7
Design Features of Warning Notices	8
Formatting of Information Regarding Property Damage.....	8
Perform Setup.....	9
Scanner Software Requirements	9
Network Connection Scanner and Printer	11
Establish the Network Connection	12
Scanner and Printer IP Configuration	12
Poweruser.....	12
Assign the IP Address.....	17
Set Up a Print Output Template	27
Scan and Print with Scan Wizard	29
Printer Calibration with Closed Loop (Optional).....	29
Activate Copy Function - (Optional).....	32

Revision History

Date	Rev.	Name	Description of Change	Reason of Change
04.12.2018	1.0	JKN	First draft	First published version
27.08.2019	1.1	JKN	Second draft	Support of DesignJet and PageWide printer series

Information about the Instructions and the Manufacturer

These instructions show you how to safely prepare and perform the setup for WT36CL-600-MF3, how to connect to a HP DesignJet or PageWide printer and setup a print output template with all parameters.

You can find a detailed overview of the supported printers on our [PrintWizard](#) product page.

Keep Instructions with the Scanner

These instructions are a part of the scanner.

- Please always store these instructions together with the scanner.
- Ensure that the instructions are available for the user.
- Enclose the instructions when you sell the scanner or transfer it in any other way.

Design Features in Text

Many text passages in these instructions have been formatted to indicate specific elements, as illustrated below:


Normal text

BUTTONS OF THE SCREEN PAGE

"Menu names"

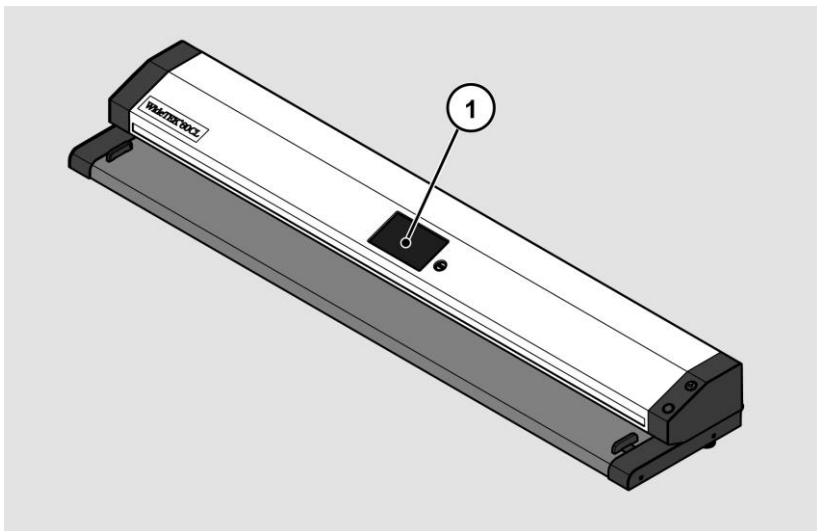
- Action steps
- Enumeration of the first level

Cross-references

-  Tips contain additional information, such as special information to prepare for and perform the setup.

Design Features in Pictures

Where a reference is made to elements in a legend or in the text, these are marked with a number (1).



Associated Documents

In addition to these instructions, other documents associated with the operation of the scanner include:

- WideTEK Scanner Unpacking and Repacking Instructions
- WideTEK-MFP-STAND Assembly Instructions
- WideTEK-TOUCH Assembly Instructions
- LCD-TOUCH Monitor Quick Start Guide
- HP Printer Setup Guide
- WideTEK Scanner Setup Instructions
- Scan2Net Reference Folder (CSTT, IT8, e.g.)
- Scan2Net Reference Targets (White Balance, e.g.)
- Legal Information (Declarations of Conformity, FCC Declaration, Safety & EMI Certificates, RoHS etc.)

Trademarks

These instructions contains information that is subject to copyright. These instructions may not be reproduced in any form, printed, filmed, edited, copied or distributed, in whole or in part, without prior written permission from Image Access GmbH.

© Image Access GmbH 2019

All rights reserved.

Scan2Net®, Scan2PAD®, Bookeye® and WideTEK® are registered trademarks of Image Access, all other trademarks are the property of their respective owners.

Contact Data of the Manufacturer in Germany

Image Access GmbH

Hatzfelderstraße 161-163

42281 Wuppertal

Phone: +49-202-27058-0

E-Mail: documentation@imageaccess.de

Internet address: www.imageaccess.de

Technical Support

Image Access technical support can be reached at the e-mail address:

support@imageaccess.de.

Contact Data of the Manufacturer in the U.S.

Image Access LP

2511 Technology Drive, Suite 109

Elgin

IL 60124

Phone: +1-224-293-2585

E-Mail: support@imageaccess.us

Internet address: www.imageaccess.us

Safety

Intended Use

The scanner is used for scanning images and documents. The documents must comply with the characteristics described in the technical specifications. The scanner is designed for use in enclosed spaces in the commercial sector.

Intended use also includes observing and following all information provided in these instructions, especially the safety instructions. Any other use is considered improper and will void the warranty and liability claims.

Ambient Conditions

Ensure that the scanner is used exclusively under the following environmental conditions:

- Ambient temperature during operation: +5 °C to +40 °C
 - Storage temperature: 0 °C to +60 °C
 - Relative humidity: 20 to 80%, non-condensing
- Ensure that the scanner is not exposed to direct sunlight.

Responsibility of the Owner





The scanner owner must ensure that only qualified personnel carry out the setup of the scanner.

Staff Qualifications

The staff that carries out the setup of the scanner must have knowledge in installing, connecting and putting computer accessories into operation.

Design Features of Warning Notices

In these instructions, the following warning information can be found:

 WARNING	
	Notices with the word WARNING warn about a dangerous situation that could lead to death or serious injuries.
 CAUTION	
	Notices with the word CAUTION warn about a situation that could lead to light or medium-scale injuries.

The following symbols are used in the warnings:

Symbol

Explanation



Danger from electrical shock



General danger symbol

Formatting of Information Regarding Property Damage

<i>ATTENTION!</i>	
	These notices warn of situations that can lead to property damage.

Perform Setup

Scanner Software Requirements

Check Firmware Version and License

The following table shows the required versions of the Scan2Net firmware, the Scan2Net HP printer driver version and the Scan2Net HP software license.

Scan2Net Firmware und Software-Option	Name
Firmware Version	>= 6.86
Print Wizard HP Version	>= 6.86
HP-Software-Option (is included with the scanner)	WTXX-PW-HP

To check the installed Scan2Net firmware version and software licenses on your scanner, please proceed as follows:

- In ScanWizard, open the Information window by clicking the INFORMATION button.



The Information window appears.



S2N Info	
DeviceType	81
SubDeviceType	04
DeviceClass	13
FirmwareVersion	6.85i
PrintWizardSCVersion	6.85a
PrintWizardLFPVersion	6.85i
APIVersion	2.2
hostname	WT36CL-600-MF-7085c208c749
devicename	-
ip	192.168.1.80
duplex	NONE
netmask	255.255.0.0
gateway	192.168.1.80
dhcp	no
options	PDF Scan2USB Scan2VGA PrintWizard LFP 1200/9600dpi PrintWizard TDS PrintWizard HP Designjet PrintWizard Epson SureColor
Status	Status: OK



The S2N INFO section shows you detailed information about your Scan2Net hardware device, such as the device type and subtype, hardware hostname of the device, IP address, gateway address and subnet mask address, the firmware version installed, and options installed.

This information is very important for troubleshooting and support issues and is required when you contact our service department.

Network Connection Scanner and Printer

A physical connection with a RJ45 standard network cable is required to send the print data to your printer.

Establish the Network Connection

 CAUTION	
	<p>Incorrect laying of the connection cables can cause tripping. Fractures, contusions and bruises can be the result.</p> <ul style="list-style-type: none">➤ Place the connecting cables so that no one can trip over them.

To establish the network connection, proceed as follows:

- Connect one plug of the enclosed network cable to the network connector socket on the back of the scanner.
- Connect the second plug to the network socket of an existing network.

To establish the network connection of the printer, proceed as follows:

1. Connect one plug of the enclosed network cable to the network connector socket at the printer.
2. Connect the second plug to the network socket of an existing network.

To establish a direct network connection between the WideTEK scanner and the printer, proceed as follows:

1. Connect one plug of the enclosed network cable to the network connector sockets of the scanner.
2. Connect the second plug to the network socket of the printer.

Scanner and Printer IP Configuration

- For the IP setup on the scanner, refer to the scanner setup instructions manual.
- For the IP setup on the printer, refer to the printer setup instructions manual.

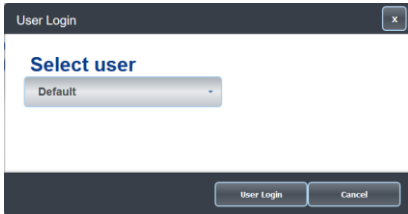
Poweruser

To setup the scanners network address, you must log in to the ScanWizard application as POWERUSER. Proceed as follows:

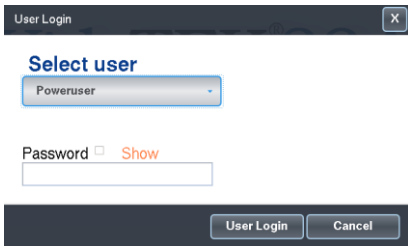
- Tap the USER DEFAULT button (1).



The User Login window appears.



- In the User Login window, select the user Poweruser.



- To enter the credentials, tap with your finger on the "Password" input field.
- Activate the "Show" box to see the password while entering it.

The screen keyboard is displayed.

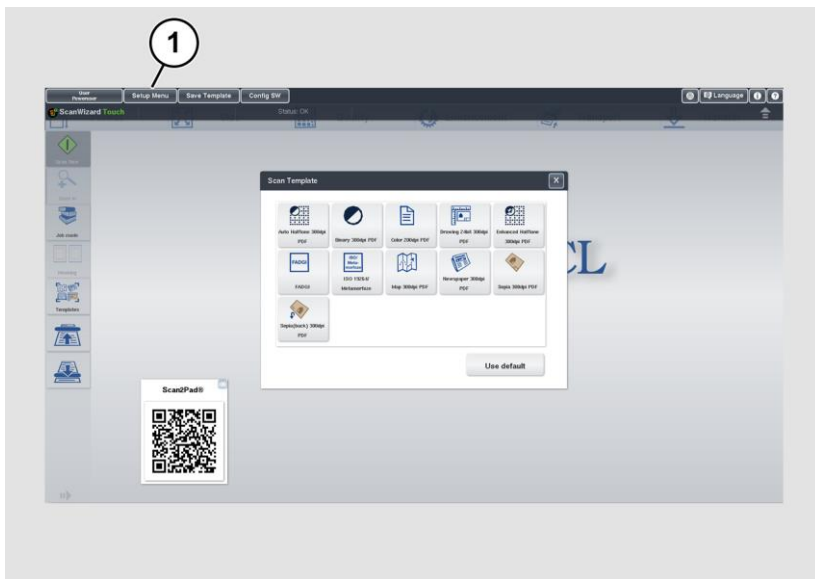


- Enter the word "Poweruser" in the field "Password".
- Please note that the input is case sensitive.
- To complete the password entry, press OK.

The User Login window appears.



- To complete the log in, press USER LOGIN.
The ScanWizard window appears.



- To start the Setup Menu, press the button SETUP MENU (1).

The "Setup Menu" screen is displayed.



White Balance: Display the "White balance" submenu

Test Suite: Display the "Test Suite" submenu

IP Address: Display the "IP Address" submenu

User Settings: Display the "User Settings" submenu

Time and Date: Display the "Time and Date" submenu

Touchscreen Test: Display the "Touchscreen Test" submenu

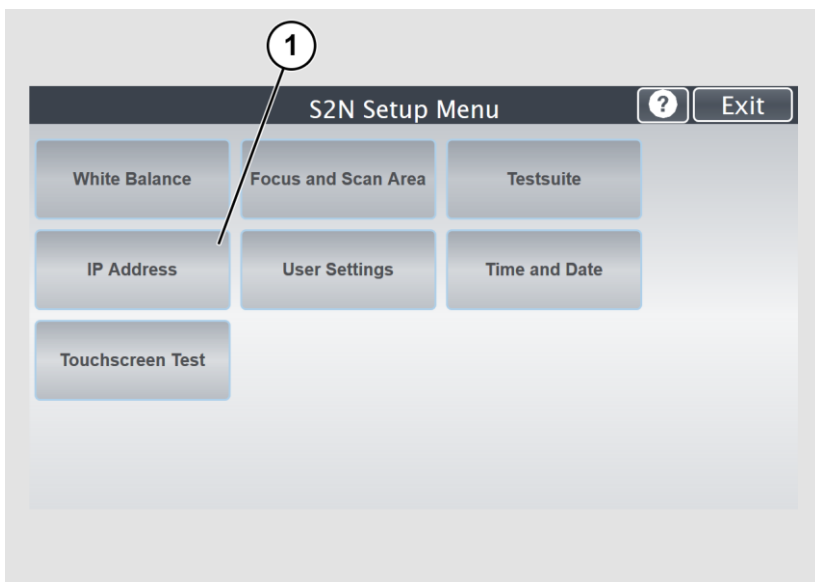
- To select a submenu from the "S2N Setup menu" screen, tap with your finger on the button of the screen.

Assign the IP Address

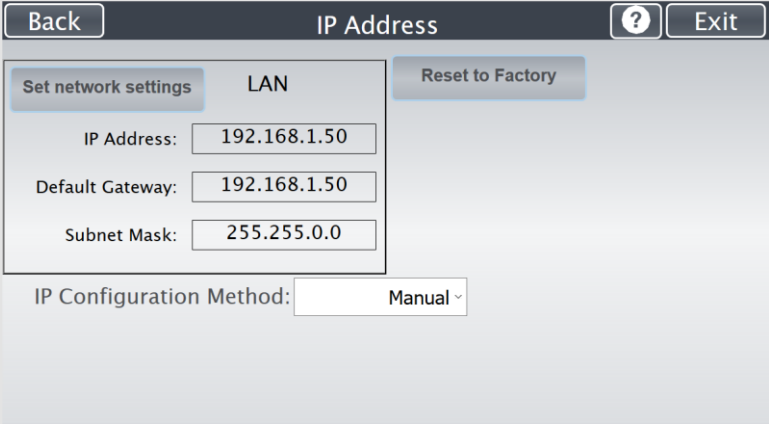
Manually assign the IP address:

To manually assign the IP address, proceed as follows:

- On the "Setup Menu" screen, tap on IP Address (1).



The "IP Address" screen is displayed.



Set network settings:

Accept the network settings provided

Reset to Factory:

Reset to factory settings

IP Address:

Input field for the IP address

Default Gateway:

Input field for the gateway address

Subnet Mask:

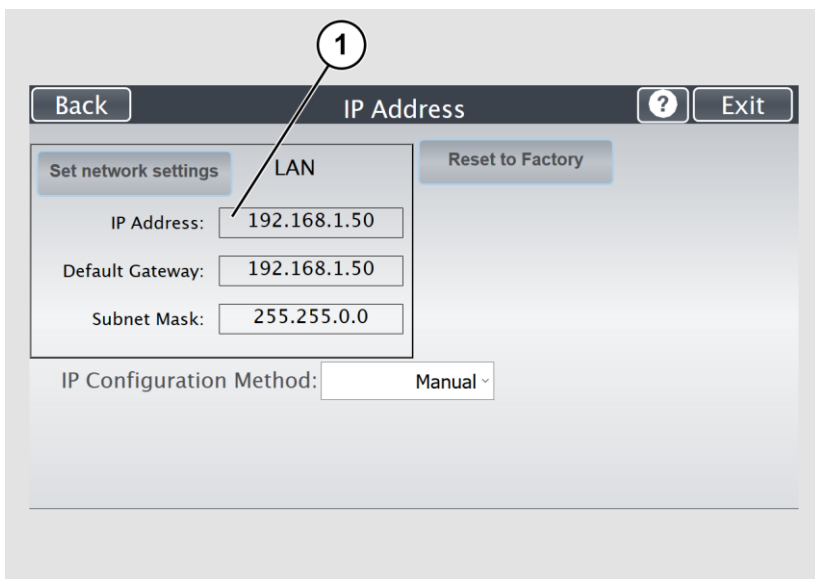
Input field for data on the subnet mask

IP Configuration Method

Assign an IP address manually or automatically

Manual/DHCP:

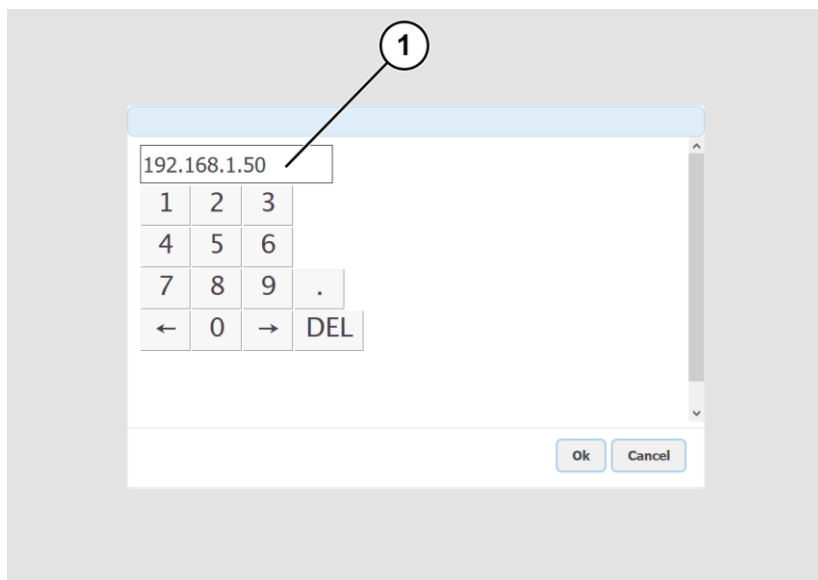
- Tap the "IP Address" (1) field.



The screenshot displays the "IP Address" configuration screen. At the top, there is a header bar with a "Back" button on the left, the title "IP Address" in the center, and a help icon (?) and an "Exit" button on the right. Below the header, there is a "Set network settings" button on the left and a "Reset to Factory" button on the right. The main content area is titled "LAN" and contains three input fields: "IP Address:" with the value "192.168.1.50", "Default Gateway:" with the value "192.168.1.50", and "Subnet Mask:" with the value "255.255.0.0". A callout bubble with the number "1" points to the "IP Address:" field. At the bottom, the "IP Configuration Method:" is set to "Manual" with a dropdown arrow.

The "IP Address" window is displayed.

- Enter the IP address (1).

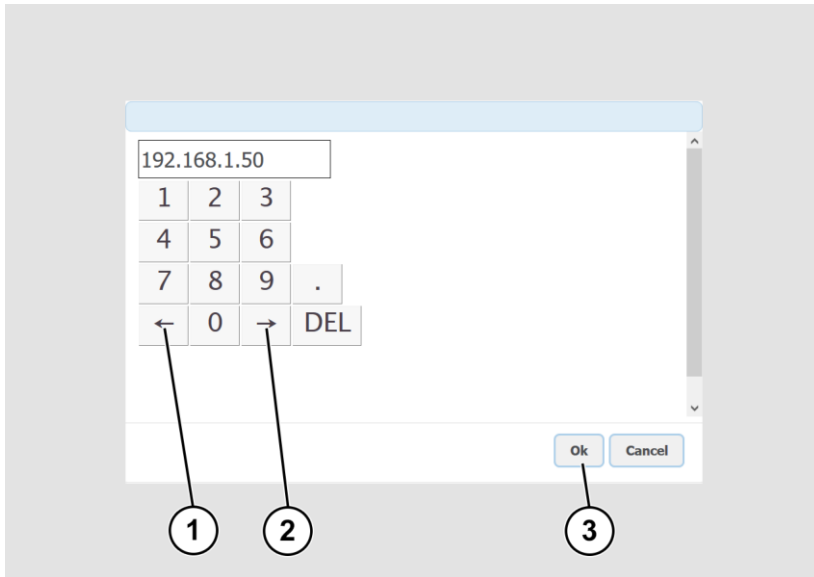


- To delete a digit, move the cursor to the right, behind the digit to be deleted and tap DEL (1).

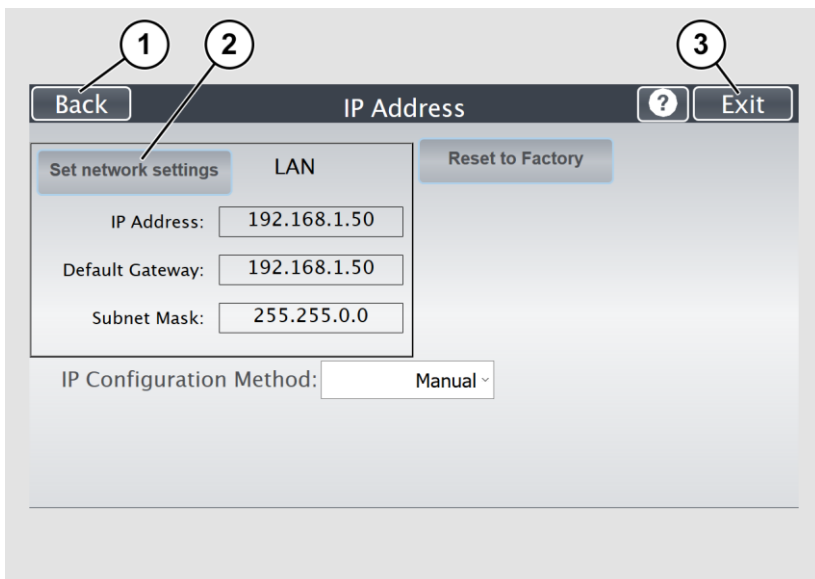


The arrow keys left (1) and right (2) next to the number "0" move the cursor within the chosen row.

- To complete the entry, press OK (3).
- Perform the settings for gateway and subnet mask in the same way.



- To save the network settings, tap SET NETWORK SETTINGS (2).
- To return to the previous submenu, tap BACK (1).
- To return to the "Start screen", tap EXIT (3).

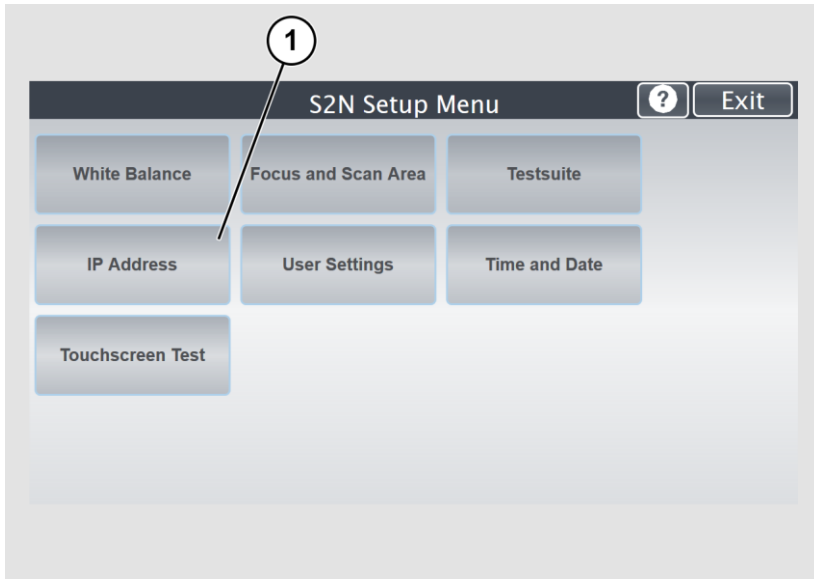


The screenshot shows the "IP Address" configuration screen. At the top, there is a dark header bar with a "Back" button (callout 1), the title "IP Address", a help icon (?), and an "Exit" button (callout 3). Below the header, there is a "Set network settings" button (callout 2) and a "Reset to Factory" button. The main content area is titled "LAN" and contains three input fields: "IP Address:" with the value "192.168.1.50", "Default Gateway:" with the value "192.168.1.50", and "Subnet Mask:" with the value "255.255.0.0". At the bottom, there is a label "IP Configuration Method:" followed by a dropdown menu currently set to "Manual".

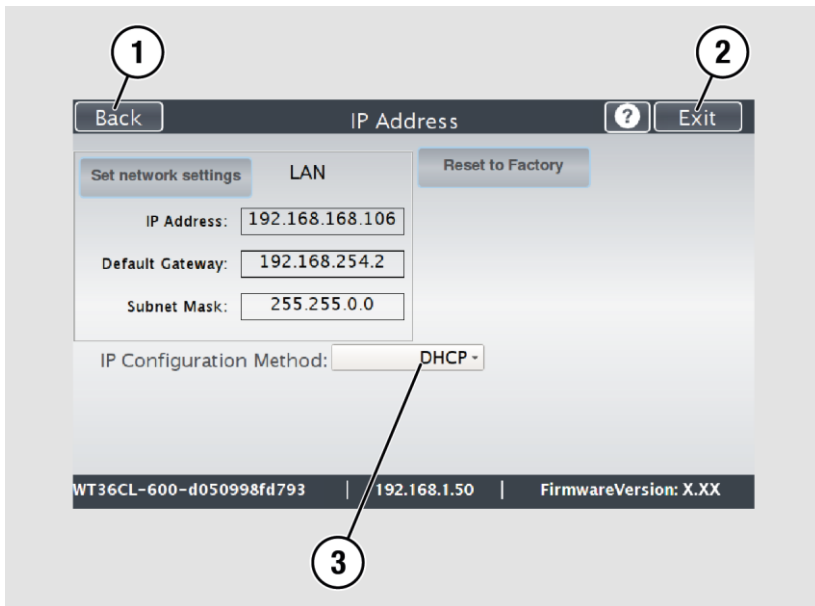
Automatically assign the IP address:

To manually assign the IP address, proceed as follows:

- On the "Setup Menu" screen, tap on IP Address (1).



- In the selection menu "IP Configuration Method", select the "DHCP" (3) entry.
- To return to the previous submenu, tap BACK (1).
- To return to the "Start screen", tap EXIT (2).



Example configurations:

Direct Network Connection		
Printer:		
	IP Address:	192.168.1.51
	Default Gateway:	192.168.1.51 (Printer IP)
	Subnet Mask:	255.255.255.0
Scanner:		
	IP Address:	192.168.1.50
	Default Gateway:	192.168.1.50 (Scanner IP)
	Subnet Mask:	255.255.255.0
Network Connection Sample		
Local Network		
	Gateway	192.168.1.1
	Netmask	255.255.255.0
Printer:		
	IP:	192.168.1.51
	Gateway:	192.168.1.1
	Netmask:	255.255.255.0
Scanner:		
	IP:	192.168.1.50
	Gateway:	192.168.1.1
	Netmask:	255.255.255.0

These are just examples of a simple configuration. If you have any questions about your network configuration, please contact your local network administrator.

Set Up a Print Output Template

Remote Printer Settings

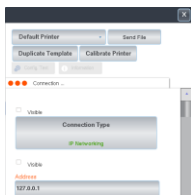
- Start the ScanWizard application on the scanner
- Go to the "Transfer" menu by a click onto the TRANSFER button.



- Tap the properties symbol on the DEFAULT PRINTER button to open the "Printwizard" menu.



- The "PrintWizard" menu is displayed.



- Tap the ADDRESS button to enter the IP address of the printer.

After entering the correct IP address, the connection to the printer is established immediately.

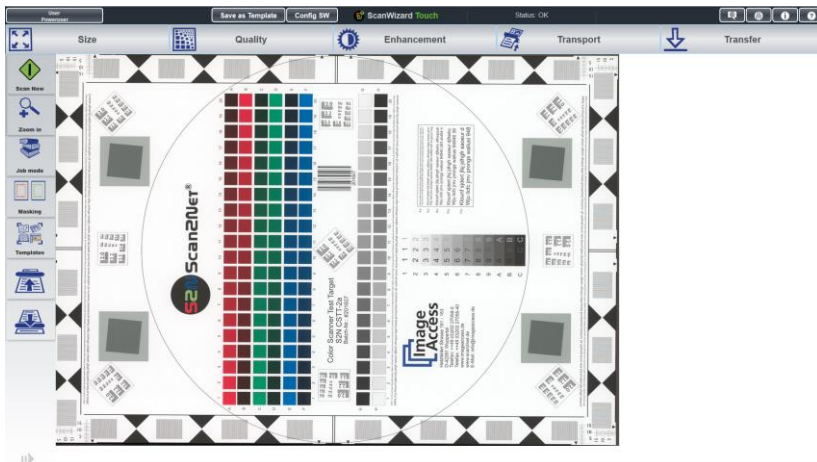
A successful connection is indicated by the "Action Status" window.

When the window is closed, the preconfiguration of the print output template is complete.

- Continue with the adjustment of the further settings in this print template.
- By activating or deactivating the VISIBLE checkbox, any function within the template can be shown or hidden for the user.
- Tap on the CONFIGURATION TEST button to print an overview of all the settings you have made.
- Tap the X button to save the settings and to complete the setup.

Scan and Print with Scan Wizard

- Start the ScanWizard application on the scanner
- Perform a scan in ScanWizard with a click on the SCAN NOW button.
- The scanned image is displayed.



- Go to the "Transfer" menu by tapping the TRANSFER button.
- Press the printer button to print the image.
- Tap on the PROPERTIES button to open the template configuration.



- The "PrintWizard" menu is displayed.
- The following illustrations provide an overview about the available printer settings in the "PrintWizard" menu.
- Any changes to these settings are only temporary and do not affect the printer template.
- Print your scanned image with the SEND FILE button.

Printer Calibration with Closed Loop (Optional)

To ensure the highest color fidelity when printing targets scanned by WideTEK-scanners, the scanner-printer pair can be calibrated beforehand.

This closed-loop calibration (CLC) consists of:

1. Generating a test target.
2. Printing the test target.
3. Scanning the test target.
4. Analyzing the test target.

Executing the following steps will perform this task.

Generating the Test Target

- Make sure you are logged in to ScanWizard as Poweruser.

Before the calibration can start, some prerequisites must be met:

- In the ScanWizard Touch App tap the button TEMPLATES on the left hand side and tap USE DEFAULT.
- Set the correct paper type in the printer. This procedure may vary depending on the printer type. Review the printer's documentation.
- Tap the button TRANSFER located in the top right corner of the ScanWizard Touch App.
- Search for the printer template in the Template Panel and tap the PROPERTIES icon.

Now you can initiate the calibration.

- In the upper panel, tap the button CALIBRATE PRINTER. Any previous test target you have printed will be invalidated because a new test target is generated each time you start the calibration. The test target shown on the screen is just an example and will most likely not match the one you will be printing.

Printing the Test Target

- Tap PRINT to print the test target on the printer.
- Check whether the printed target has any major flaws (e.g. if the printer unexpectedly ran out of ink). If so, you can always tap BACK and generate a new target.

Only the current target is valid and all older targets are of no further use. If you proceed with the calibration using a different target than the one you just printed, the calibration will fail.

The target will always be printed in the ISO A4 format.

Scanning the Test Target

- Feed the target to the scanner and tap SCAN.

Once the scanning is complete you can see the scanned image and a red frame.

- Place the frame so that it contains the scanned target. Use the corner markers for orientation.

You can always tap BACK to repeat the scanning.

- Tap NEXT.

You can see the complete cropped image.

- If you have misplaced the frame you can tap BACK and redo the cropping.

Analyzing the Test Target

- Tap "Analyze".

This step can take up to several minutes so please be patient.

Once the process has completed there will be either a red or green text on the right side of the panel starting with "Profile check complete".

If it is green you can tap "Store ICC Profile" and the calibration is complete.

If it is red, you must repeat the calibration.

- Tap the X button of the PrintWizard window to save the settings and complete the setup.

Activate Copy Function - (Optional)

To activate the copy function, proceed as follows:

- Switch to the ScanWizard Status Bar.
- Open the ScanWizard Poweruser configuration menu by tapping the CONFIG SW button.
- In the SCANWIZARD CONFIGURATION window, switch to the WORKFLOW tab.
- Activate the checkbox at the beginning of the line EXPORT FILE IMMEDIATELY AFTER SCANNING.
- Tap the RESTART SCANWIZARD button to complete the process.

Restarting the ScanWizard automatically logs off the Poweruser and logs on the Default user as the now active scanner user

End of document